

CGB/hCG-Beta Antibody (Center)
Affinity Purified Rabbit Polyclonal Antibody (Pab)
Catalog # AP14603C**Specification**

CGB/hCG-Beta Antibody (Center) - Product Information

Application	WB,E
Primary Accession	A6NKO9
Other Accession	P0DN87 , P0DN86 , Q6NT52
Reactivity	Human
Host	Rabbit
Clonality	Polyclonal
Isotype	Rabbit IgG
Antigen Region	100-130

CGB/hCG-Beta Antibody (Center) - Additional Information**Gene ID** 114335**Other Names**

Choriogonadotropin subunit beta, CG-beta, Chorionic gonadotrophin chain beta, CGB, CGB3

Target/Specificity

This CGB/hCG-Beta antibody is generated from rabbits immunized with a KLH conjugated synthetic peptide between 100-130 amino acids from the Central region of human CGB1

Dilution

WB~~1:1000

E~~Use at an assay dependent concentration.

Format

Purified polyclonal antibody supplied in PBS with 0.09% (W/V) sodium azide. This antibody is purified through a protein A column, followed by peptide affinity purification.

Storage

Maintain refrigerated at 2-8°C for up to 2 weeks. For long term storage store at -20°C in small aliquots to prevent freeze-thaw cycles.

Precautions

CGB/hCG-Beta Antibody (Center) is for research use only and not for use in diagnostic or therapeutic procedures.

CGB/hCG-Beta Antibody (Center) - Protein Information**Name** CGB1**Cellular Location**

Secreted.

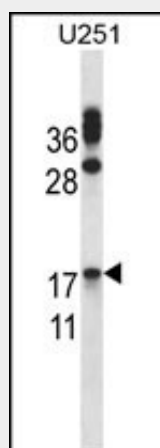
Tissue Location

Expressed in placenta, testis and pituitary.

CGB/hCG-Beta Antibody (Center) - Protocols

Provided below are standard protocols that you may find useful for product applications.

- [Western Blot](#)
- [Blocking Peptides](#)
- [Dot Blot](#)
- [Immunohistochemistry](#)
- [Immunofluorescence](#)
- [Immunoprecipitation](#)
- [Flow Cytometry](#)
- [Cell Culture](#)

CGB/hCG-Beta Antibody (Center) - Images

CGB/HCG-Beta Antibody (Center) (Cat. #AP14603c) western blot analysis in U251 cell line lysates (35ug/lane). This demonstrates the CGB/HCG-Beta antibody detected the CGB/HCG-Beta protein (arrow).

CGB/hCG-Beta Antibody (Center) - Background

This gene is a member of the glycoprotein hormone beta chain family and encodes the beta 3 subunit of chorionic gonadotropin (CG). Glycoprotein hormones are heterodimers consisting of a common alpha subunit and a unique beta subunit which confers biological specificity. CG is produced by the trophoblastic cells of the placenta and stimulates the ovaries to synthesize the steroids that are essential for the maintenance of pregnancy. The beta subunit of CG is encoded by 6 genes which are arranged in tandem and inverted pairs on chromosome 19q13.3 and contiguous with the luteinizing hormone beta subunit gene.

CGB/hCG-Beta Antibody (Center) - References

Cole, L.A. Placenta 31(8):653-664(2010) Ra, Y.J., et al. Interact Cardiovasc Thorac Surg 11(1):114-116(2010) Verma, B., et al. J. Immunol. 184(4):2156-2165(2010) Handschuh, K., et al. Placenta 30(12):1016-1022(2009) Reisenbichler, E.S., et al. Breast J 15(5):527-530(2009)